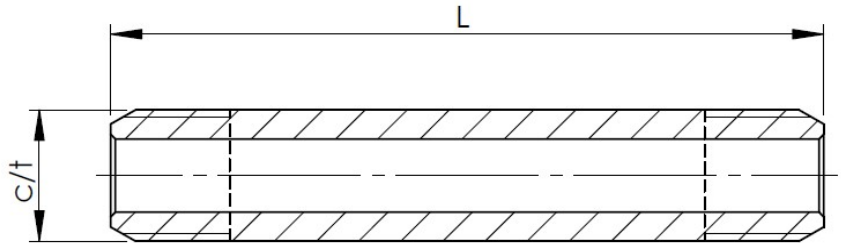


Nipples in Super Duplex (90207)

Operating pressure:	1.500 bar/21.500psi
Temperature:	-60°C to +200°C
Material body:	AISI316L
Connections:	Cone and thread



Catalogue number	L [mm]	c/t ["]
90207 3/8x150	150	3/8
90207 3/8x203	203	3/8
90207 3/8x270	270	3/8
90207 3/8x347	347	3/8

Datasheet subject to change without notice

Revision 0