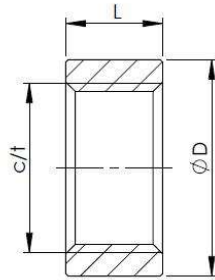


Collar (9060)

Operating pressure:	1.500 bar
Temperature:	-60°C to +200°C
Material body:	AISI316L
Connections:	Cone and thread



Catalogue number	$\varnothing D$	L	c/t
9060 1/4	$\varnothing 9,5$	5,6	1/4
9060 3/8	$\varnothing 12$	6,4	3/8
9060 9/16	$\varnothing 18,3$	8,1	9/16
9060 3/4	$\varnothing 23,8$	9,8	3/4
9060 1	$\varnothing 31,6$	12,7	1

Datasheet subject to change without notice

Revision 0