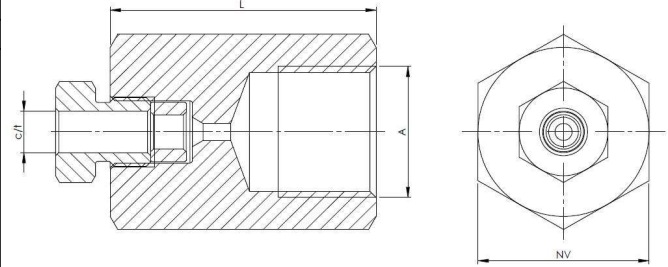


Adapter female-female (9066NPT)

Operating pressure:	1.050 bar/15.000psi
Temperature:	-60°C to +200°C
Material body:	AISI316L
Connections:	Female cone and thread / NPT thread



Catalogue number	L [mm]	c/t ["]	NV [mm]	A ["]
9066 1/4x1/4N	35	1/4	22	1/4 NPT
9066 1/4x3/4N	38,5	1/4	36	3/4 NPT
9066 3/8x1/2N	44	3/8	27	1/2 NPT
9066 9/16x1/2N	50	9/16	27	1/2 NPT

Datasheet subject to change without notice

Revision 0