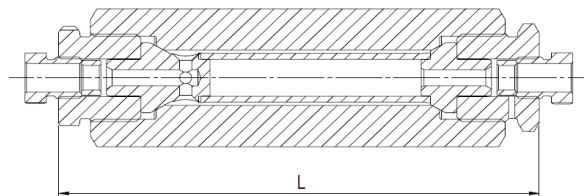
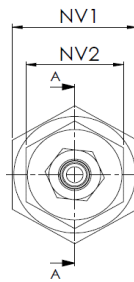


IN LINE FILTERS
bar

1500

EV METALVÆRK
EV HYDRØGEN®

Operating pressure:	1500 bar/21.500 psi
Temperature:	-40°C to +200°C
Material body:	AISI316L
Filtration:	1 µm, 98 % filtration
Connections:	Cone and Thread connection
Tests:	EN10266-1 P10, 2250 bar water
Certification:	PED (2014/68/EU)



Catalogue number	SIZE	L	NV1	NV2	Kv
90110 3/8	3/8"	158	41	32	0,65
90110 9/16	9/16"	164	41	36	0,65
90110 3/4	3/4"	278	60	50	1,3
90110 1	1"	298	60	50	1,3